

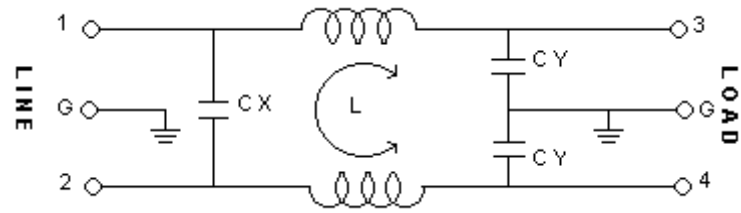
規格

項目 / 型號		YF01T6/T8	YF03T6/T8	YF06T6/T8	YF10T6/T8
額定電壓		125/250V AC	125/250V AC	125/250V AC	125/250V AC
額定電流		1A	3A	6A	10A
洩漏電流		0.8mA MAX 250V,50HZ	0.8mA MAX 250V,50HZ	0.8mA MAX 250V,50HZ	0.8mA MAX 250V,50HZ
耐電壓	線對線	1450V DC	1450V DC	1450V DC	1450V DC
	線對地	2250V DC	2250V DC	2250V DC	2250V DC
絕緣阻抗		100M ohm MIN 250VDC	100M ohm MIN 250VDC	100M ohm MIN 250VDC	100M ohm MIN 250VDC
直流阻抗		0.5 ohm MAX	0.2 ohm MAX	0.15 ohm MAX	0.1 ohm MAX
溫度上升		30C MAX	30C MAX	30C MAX	30C MAX
溫度使用範圍		-25 ~ +85C	-25 ~ +85C	-25 ~ +85C	-25 ~ +85C
CX		0.1uF	0.1uF	0.1uF	0.1uF
CY		3300pF	3300pF	3300pF	3300pF
電阻		1.5M/ohm	1.5M/ohm	1.5M/ohm	1.5M/ohm
電感值		3.7mH	1.8mH	0.7mH	0.3mH
衰減量	NORMAL MODE 25dbMIN	0.50 ~ 50MHZ	0.70 ~ 40MHZ	1.00 ~ 50MHZ	1.50 ~ 50MHZ
	COMMON MODE 25dbMIN	0.10 ~ 50MHZ	0.20 ~ 35MHZ	0.70 ~ 50MHZ	1.50 ~ 50MHZ

3. 衰減量

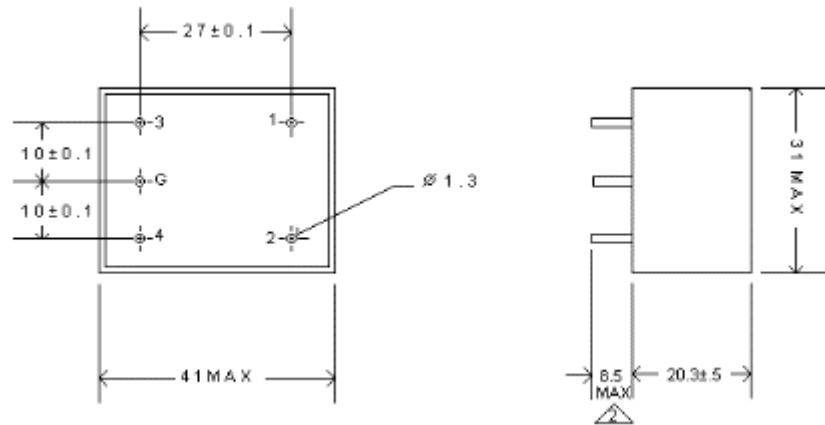
COMMON MODE (LINE TO GROUND) IN 50 OHM SYSTEM							
TYPE	CURRENT	FREQUENCY-MHZ					
	RATING	0.15	0.5	1.0	5.0	10.0	30.0
YF01T6/T8	1A	26	39	43	44	50	26
YF03T6/T8	3A	20	32	36	35	26	18
YF06T6/T8	6A	12	20	35	38	44	39
YF10T6/T8	10A	16	15	21	34	41	35
DIFFERENTIAL MODE (LINE TO LINE) IN 50 OHM SYSTEM							
YF01T6/T8	1A	8	19	27	44	45	22
YF03T6/T8	3A	7	17	23	37	38	18
YF06T6/T8	6A	6	16	21	45	46	37
YF10T6/T8	10A	4	13	20	43	46	35

4. 線路圖



5. 尺寸圖

YF SERIES



大豪电子
 电话: 0755-83233025
<http://www.szdahao.com>
<http://www.very-tec.com>