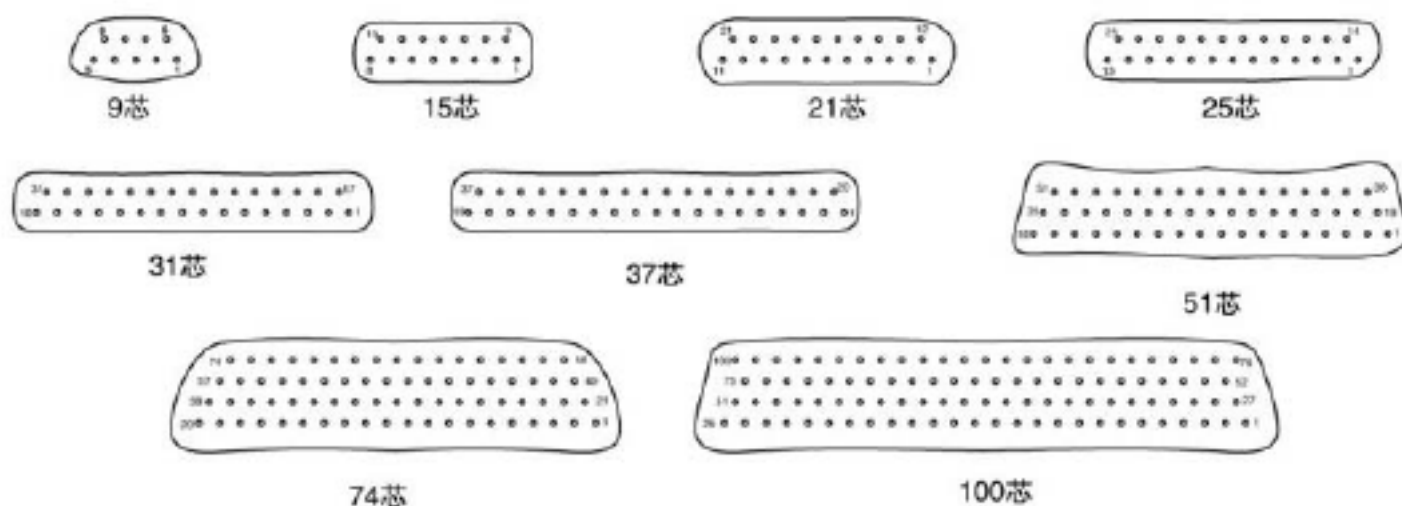


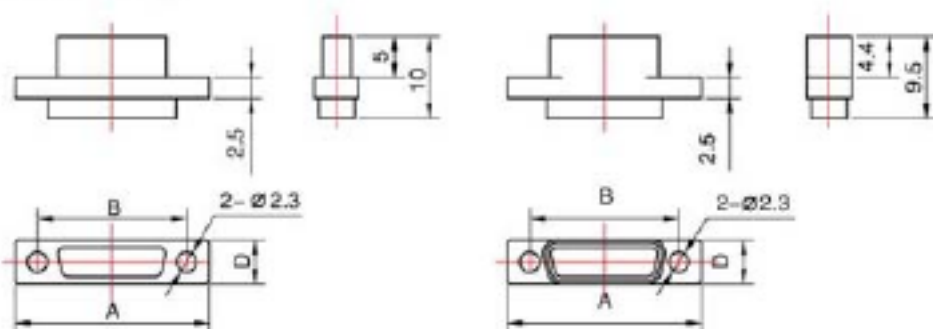
型谱排列：Arrangement



外形示意图：Outer Dimensions

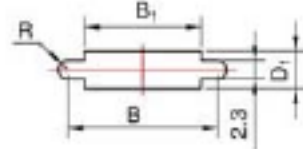
1、J30压接系列

插头 Plug:



插座 Receptacle:

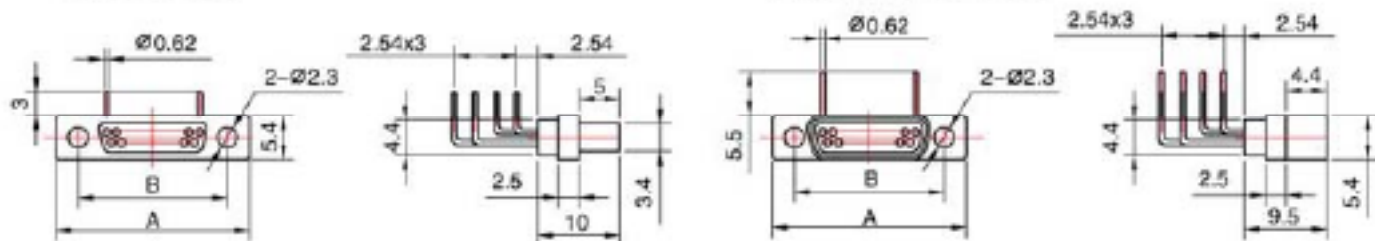
安装开口尺寸 Mounting Dimension:



2、J30-W弯插印制板系列(15、25、37芯)：

插头 Plug:

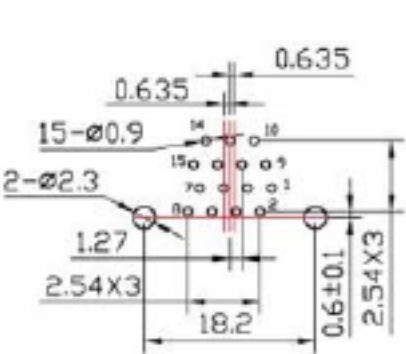
插座 Receptacle:



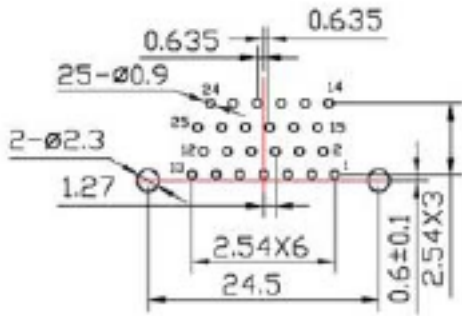
型号	A	B	B ₁	D	D ₁
J30-15TJ/ZK(0.07)	23.6	18.2	4.2	5.4	4.6
J30-21TJ/ZK(0.07)	27.5	22	17.9	5.4	4.6
J30-25TJ/ZK(0.07)	30	24.5	20.8	5.4	4.6
J30-31TJ/ZK(0.07)	33.7	28.3	24.2	5.4	4.6
J30-37TJ/ZK(0.07)	37.5	32.2	28.2	5.4	4.6
J30-51TJ/ZK(0.07)	36.3	30.8	26.9	6.5	5.9

外形示意图(续) : Outer Dimensions

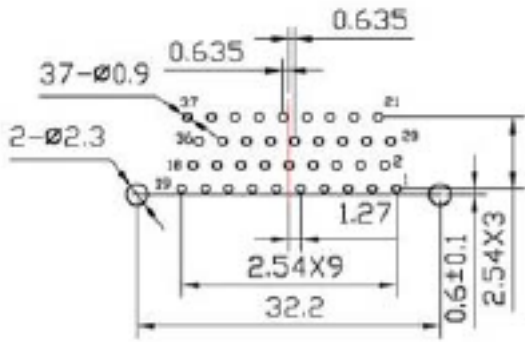
安装开口尺寸(J30-W,15,25,37) : Mounting Dimensions



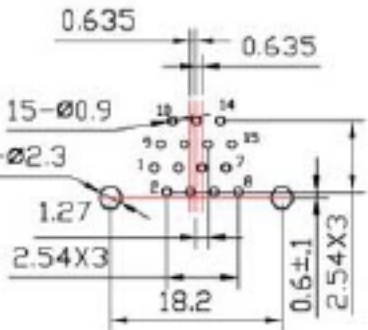
J30-15TJW



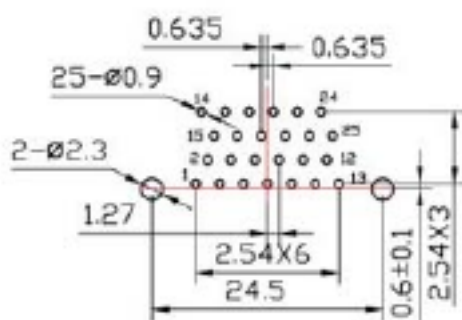
J30-25TJW



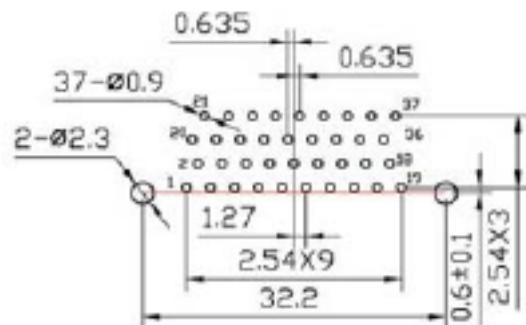
J30-37TJW



J30-15ZKW



J30-25ZKW

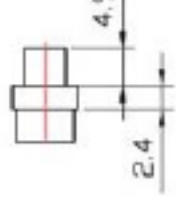
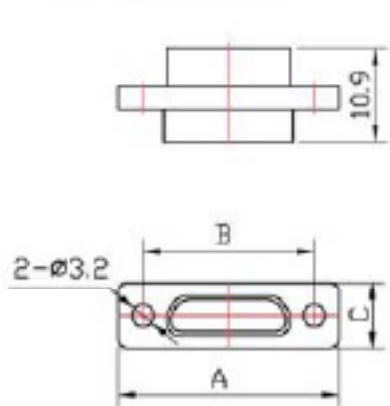
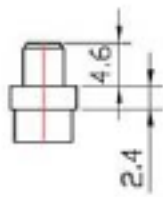
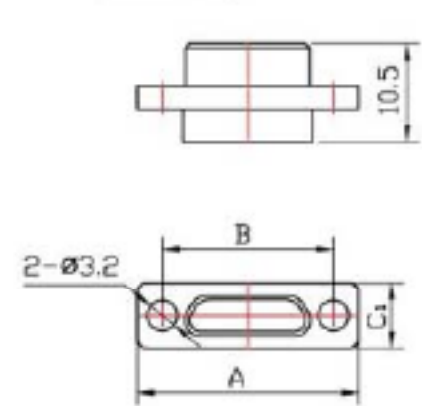


J30-37ZKW

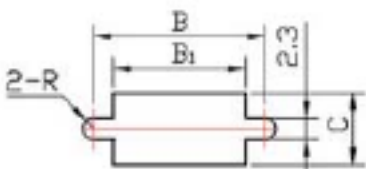
3、J30J普通型压接系列

插头 Plug:

插座 Receptacle:



板前安装开口尺寸: Mounting Dimensions

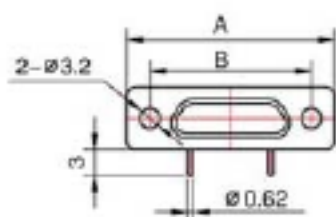
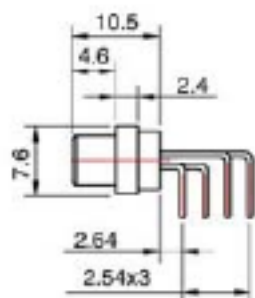


型号	A	B	B ₁	C	C ₁
J30J-15TJ/ZK	23.5	18.2	14.1	7.6	7
J30J-25TJ/ZK	29.8	24.5	20.5	7.6	7
J30J-37TJ/ZK	37.4	32.2	28.1	7.6	7
J30J-51TJ/ZK	36.4	30.86	26.9	8.7	8.1

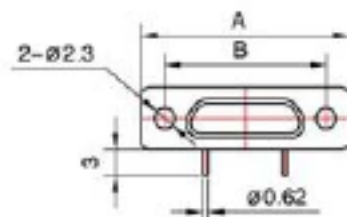
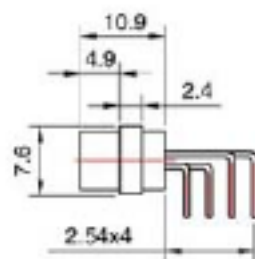
外形示意图(续): Outer Dimensions

4、J30J-W普通型弯插印制板系列 (15、25、37) :

插头 Plug:

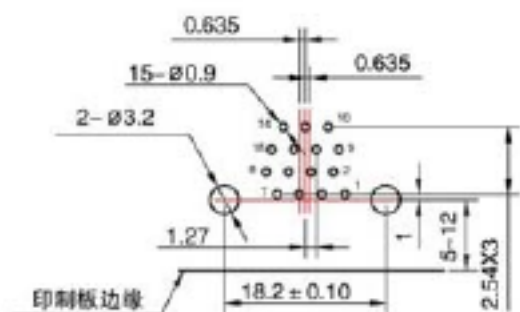


插座 Receptacle:

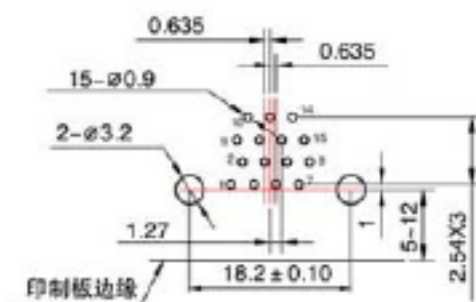


型号	A	B
J30J-15ZJW	23.5	18.2
J30J-25ZKW	29.8	24.5
J30J-37ZKW	37.4	32.2

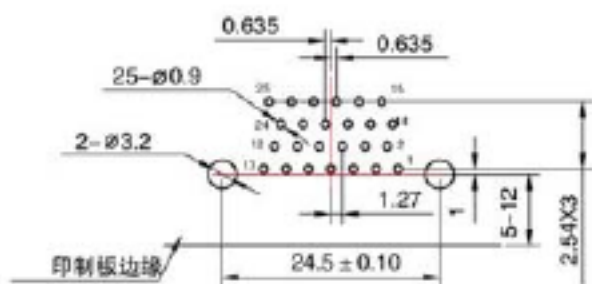
安装开口尺寸(J30-W,15,25,37): Mounting Dimensions



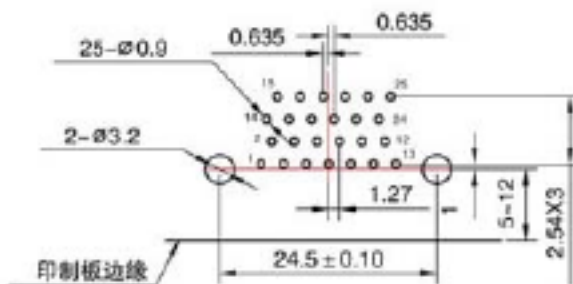
J30J-15TJW



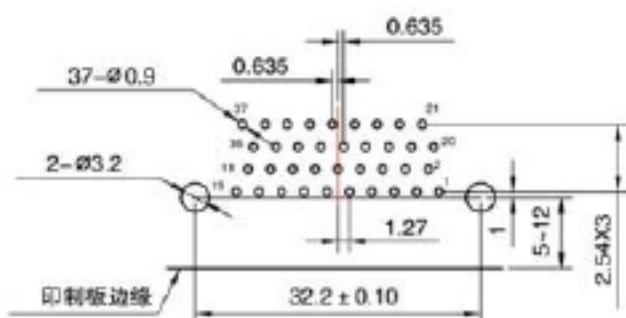
J30J-15ZKW



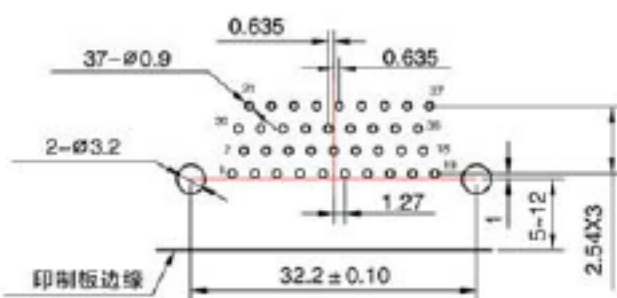
J30J-25TJW



J30J-25ZKW



J30J-37TJW



J30J-37ZKW